

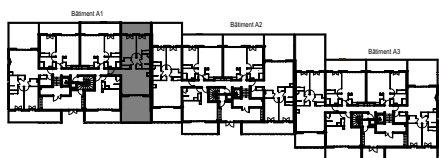
"LES TERRASSES DU STILETTO" - Bâtiment A1

Chemin du Stiletto - AJACCIO

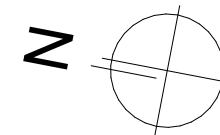
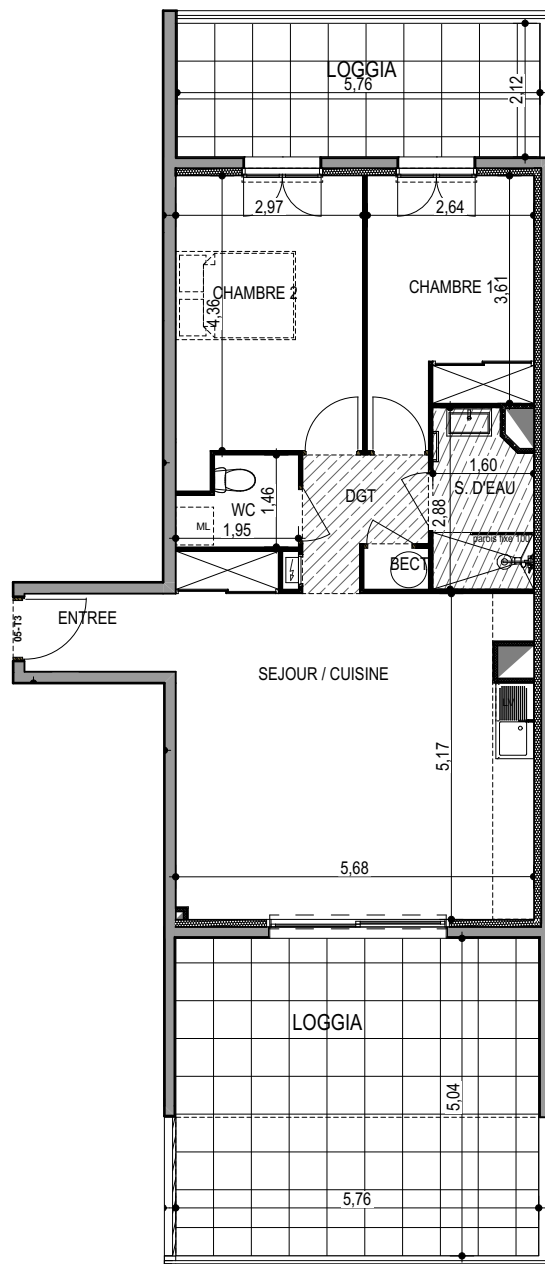
Appartement: A1-05
RDC

T3
Surfaces habitables

Entrée	3.00 m ²
Séjour - Cuisine	29.90 m ²
Dégagement	3.50 m ²
Chambre 1	10.10 m ²
Chambre 2	13.30 m ²
WC	2.45 m ²
Salle d'eau	4.25 m ²
Placard ECT	0.65 m ²
TOTAL	67.15 m²
Loggia	29.05 m ²
Loggia	12.20 m ²



0m 1m 2m



PLAN DE VENTE